

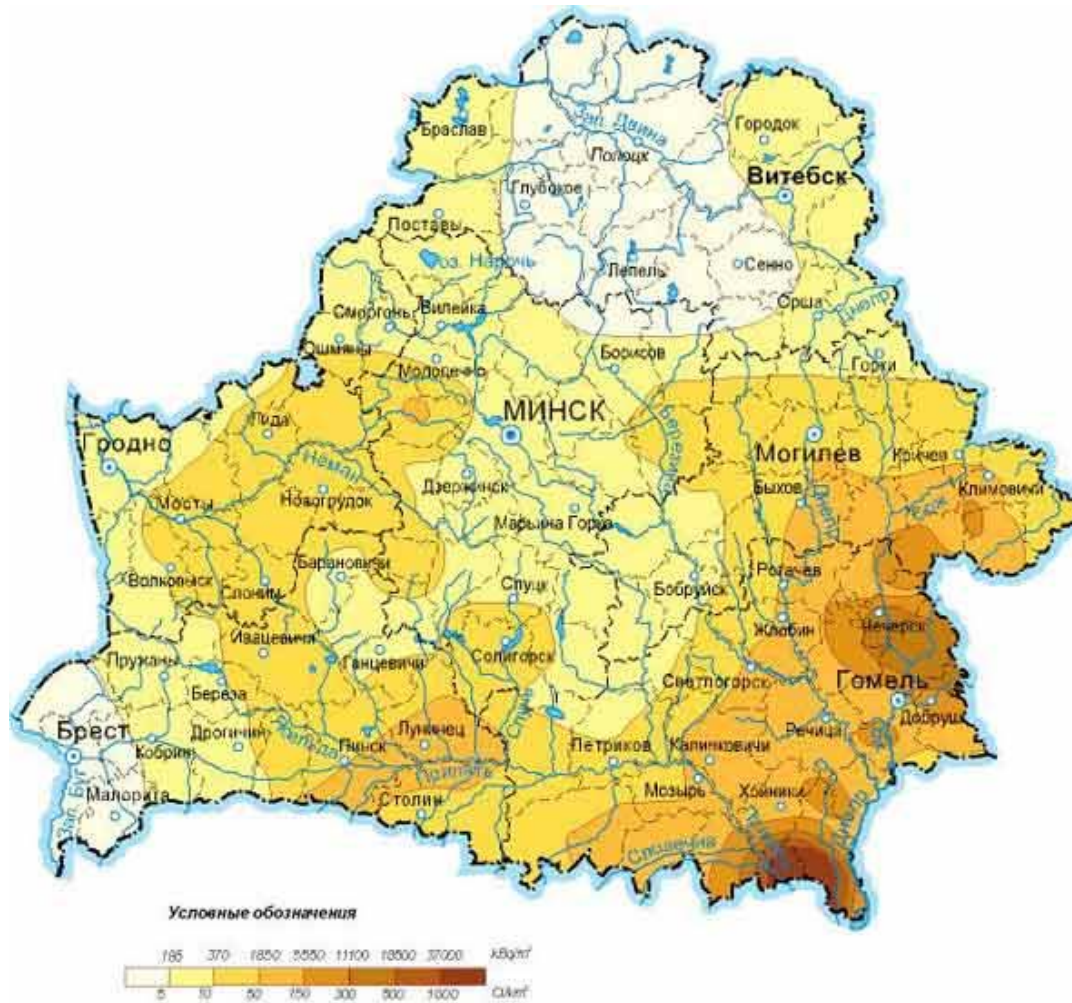


# ***BELARUS RED CROSS CHARP***





# Iodine-131 contamination (1986)



Short half life period – long lasting effect



# *Flashback*

- ▶ 2 million people (1/5 of population) suffered
- ▶ About 135,000 people resettled
- ▶ 23 % of Belarus's territory contaminated with radioactive fallout (46,450 square km)



# Flashback



**CHARP started in  
1990 in Belarus,  
Ukraine and Russia  
with support of IFRC**

**Three target regions  
were selected for  
Belarus – Brest,  
Gomel and Mogilev**



# *CHARP in action*



**Mobile diagnostic laboratories in 3 regions**

**Thyroid cancer examination, referral**

**Breast cancer examination, referral**

**Test for blood sugar**

**Vitamins dissemination (to boost immune systems)**

**Humanitarian Assistance**

**Psychological assistance**



# *Numbers*

- ▶ 45,000 persons examined annually
- ▶ More than 1,000 cases of thyroid cancer diagnosed annually by the laboratories



**Thank you for your attention!**